

STONE MASON[®]

Concrete Finish System

Create the Look and Durability of Real Flagstone, Slate, Brick, Tile and Interlocking Brick over Concrete Surfaces to Add Beauty and Prestige to Driveways, Patios, Pool Decks, Walkways and Steps, Garage or Basement Floors - Interior or Exterior



A HIGH PERFORMANCE CEMENT BASED SYSTEM

The **Stone Mason Concrete Finish System** is designed for application over new or existing concrete surfaces, exterior and interior. It gives old, tired looking concrete surfaces a fresh and elegant beauty, as well as lasting durability. It's the inexpensive, practical way to make all your concrete surfaces look exceptional. Add value and protection to your residential or commercial project. Choose from a wide variety of patterns (see below).

What you should know about the Stone Mason Concrete Finish System

It is a blend of high performance acrylic grout and cement formulations that offer long-lasting protection, opportunities for outstanding decor and superior results when used over concrete surfaces, new and retrofit. The system offers a wide variety of decorative colors and patterns. Create beautiful, durable surfaces to suit the most discriminating taste. When protected with our "ultimate" **TOP COAT SEALER**, the system is stable and will please you for many years.

It's So Easy to Do!

The first step is to view the **Stone Mason Concrete Finish System Video** on display at this store. The video will show you step-by-step how to apply the Stone Mason Concrete



speed electric drill with paint paddle, utility knife, plastic measuring cup, paint roller and tray, stainless steel "pool" trowel (one with rounded corners), knee pads, latex gloves, safety glasses, pencil, measuring tape, scissors, 1/2" filament tape, builder's square, camel-back sponge, broom and rub brick are all tools you will need.

Now it is time for the most important step in the project **Surface Preparation**. The area to be finished must be

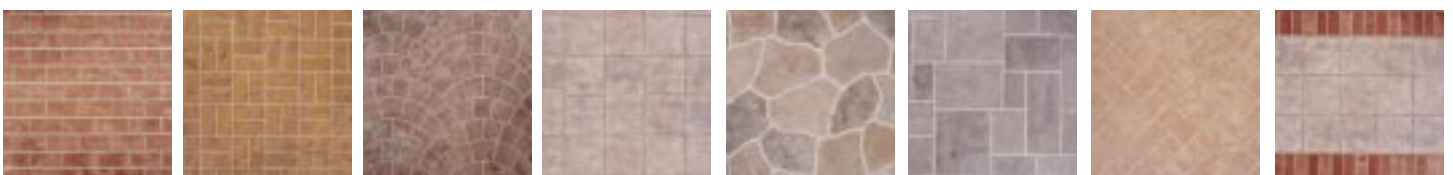
smooth, clean, dry and free of concrete sealer, paint or any surface contamination such as oil or grease. Any cracks, chips or holes must be repaired. We recommend that small cracks and chips be filled with **Stone Mason Concrete Crack Filler** and that any larger areas of damage be repaired with **Stone Mason Vinyl Cement Patch**. If the area to be finished is new concrete, it should have been allowed to cure for 28 days and then should be washed down with an acid wash and rinsed with a soda solution. All these steps are covered in the **detailed instructions in the Grout & Finish Pail**. Also, there should be adequate slope to allow proper drainage. We recommend 1/4" per lineal foot. Standing water on the completed finish should be avoided.

Finish System. When you have seen the video, then you can decide upon the surface design and color(s) you want to achieve. Illustrated below there are 8 patterns and 11 colors from which to choose.

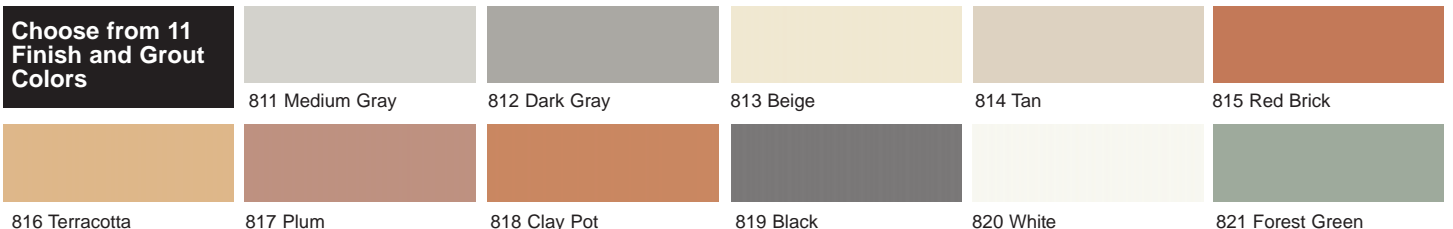
Take note of the surrounding area and the current colors on your house and on any furnishings you will want to use when the project is complete. With the many colors and patterns available to you, some extra planning now, **before** you start, helps ensure pleasing results. Next you will need to **accurately** measure the area you want to finish. This will determine the amount of product you will require. With all these preliminary decisions made, be sure you have all the tools required. A good variable

smooth, clean, dry and free of concrete sealer, paint or any surface contamination such as oil or grease. Any cracks, chips or holes must be repaired. We recommend that small cracks and chips be filled with **Stone Mason Concrete Crack Filler** and that any larger areas of damage be repaired with **Stone Mason Vinyl Cement Patch**. If the area to be finished is new concrete, it should have been allowed to cure for 28 days and then should be washed down with an acid wash and rinsed with a soda solution. All these steps are covered in the **detailed instructions in the Grout & Finish Pail**. Also, there should be adequate slope to allow proper drainage. We recommend 1/4" per lineal foot. Standing water on the completed finish should be avoided.

Choose from 8 Attractive Stencil Patterns



Brick Brickweave Fanstone Grande Tile Flagstone King's Manor Herringbone Brick Strip (shown with Grande Tile)



Choose from 11 Finish and Grout Colors

811 Medium Gray 812 Dark Gray 813 Beige 814 Tan 815 Red Brick
816 Terracotta 817 Plum 818 Clay Pot 819 Black 820 White 821 Forest Green

5 EASY-TO-APPLY STEPS as shown in the Video

STEP 1 – GROUT COAT

One pail **GROUT & FINISH COATING**
plus desired Liquid Tint
Covers 100 Square Feet (9.3m²)

Included in this pail are liquid Prep Coat, white modified cement dry mix and liquid catalyst. Prep Coat is applied to smooth concrete immediately prior to application of mixed Grout Coating. Prep Coat must be wet when applying the Grout Coating. Pour mixed Grout Coating onto smooth concrete surface and spread using a stainless steel pool trowel to approximately 1/16" (0.16 cm). More complete instructions included in the pail.

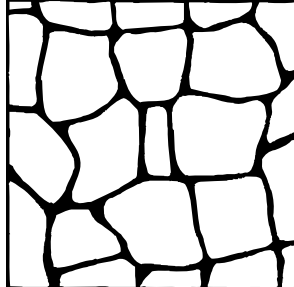


Prep Coat is followed by Grout Coating

STEP 2 – PATTERN STENCIL

Each package of **STENCILS**
contains approximately
35 Square Feet (3.25m²)

Choose from a variety of patterns shown the other side of this page. Easy to position and easy to remove. Not reusable. More detailed instructions with each package of pattern stencils.



Position; then adhere Pattern Stencil

STEP 3 – FINISH COAT

One pail **GROUT & FINISH COATING**
plus desired Liquid Tint
Covers 100 Square Feet (9.3m²)

Contents as listed in step 1. Pour mixed finish coating over the completed Grout Coating and already installed Pattern Stencil surface. Spread the Finish Coating over the stencil surface using a stainless steel pool trowel to thickness of pattern stencil, approximately 1/16" (0.16 cm).



Trowel Finish Coating over Pattern Stencil

STEP 4 – ACCENT COLOR

Liquid Shading and Highlighting

Mix with Liquid Tint to shade and highlight your Concrete Finish Coating surface. Add the Stone Mason "Liquid Tint" in incremental amounts to achieve desired color and mix with a paint stick. Adding the entire contents of the "Liquid Tint" most closely approximates the color as shown on the color chart, less will yield a lighter variation of that color. Apply by using light strokes with a camel-back sponge.



Sponge on Accent Color; remove Pattern Stencil

STEP 5 – TOP COAT SEALER

One can **TOP COAT SEALER**
Covers 150-200 Square Feet (14-18.5m²)

Clear, acrylic water-based polyurethane sealer used to provide ultimate protection for the Concrete Finish System surface. Apply on either exterior or interior surfaces. UV-protective shell lasts up to three times longer than conventional sealers. Specially formulated to give long lasting protection.



Protect entire surface with Top Coat Sealer

Concrete Finish System Estimate Chart

Step	Product	100 sq. ft. (9.23 m ²)	500 sq. ft. (46.15 m ²)	My Required sq. ft. (m ²)
1. Grout Coat	Grout & Finish Coat Liquid Tint	1 Pail 1 Container	5 Pails 5 Containers	
2. Pattern	Pattern Stencils	3 Sleeves	15 Sleeves	
3. Finish Coat	Grout & Finish Coat Liquid Tint	1 Pail 1 Container	5 Pails 5 Containers	
4. Shade & Highlight	Accent Color Liquid Tint	1 Container 1 Container	2 Containers 2 Containers	
5. Sealer	Top Coat Sealer	1 Gallon (3.78 L)	5 Gallons (5 x 3.78 L)	

U. S. E. HICKSON PRODUCTS LTD.



15 Wallsend Drive, Scarborough, Ontario, Canada M1E 3X6 • Telephone: (416)724-2000 • FAX: (416)724-6818
e-mail: cutomerservice@usehickson.com
ZB-101